

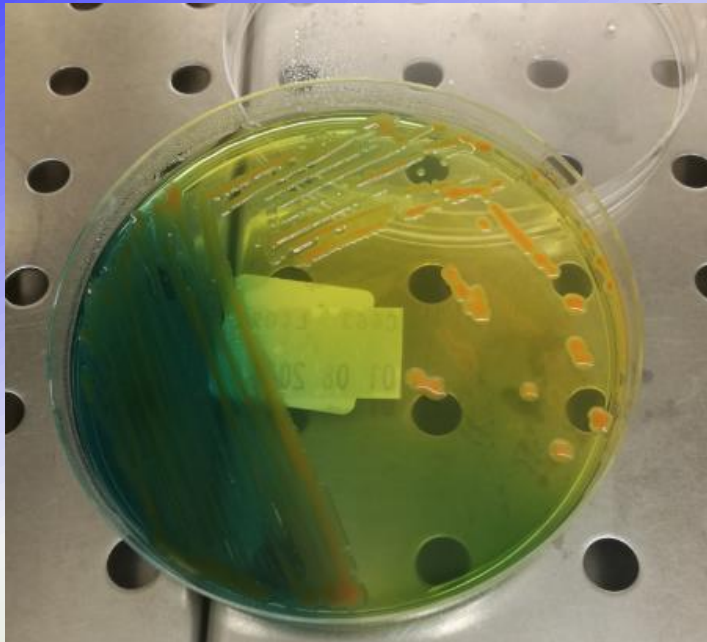
In-field activities : observation and description of presumptive colonies in selective media

Alessandra Cornacchia, WOA CC FH IZS-Teramo, Italy

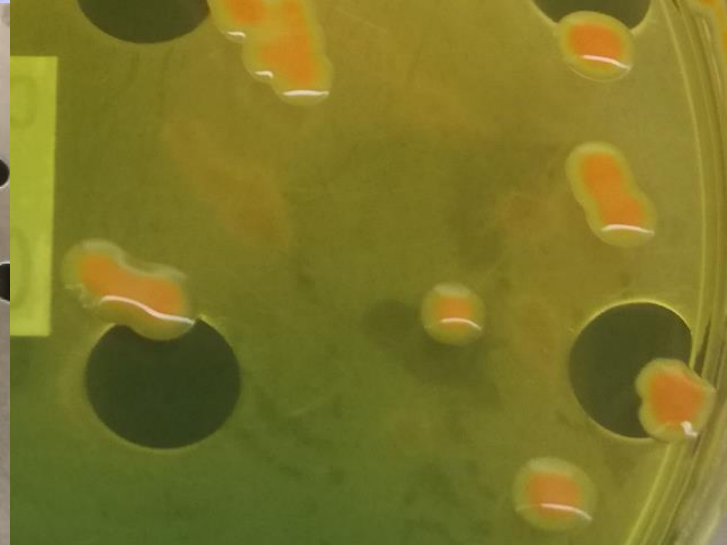
ERFAN Laboratory training course 17-21 October 2022

*“Detection and characterization of *Listeria monocytogenes*, *Klebsiella pneumoniae* and *Salmonella* spp.”*

Kp: Typical colonies on SCAI



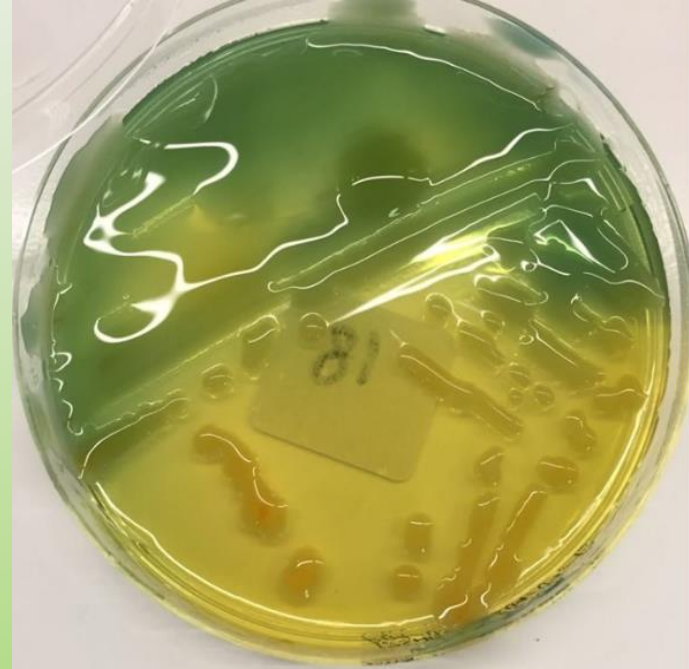
K. pneumoniae



- Large
- Yellow
- Mucoid
- Moist
- Transparent halo

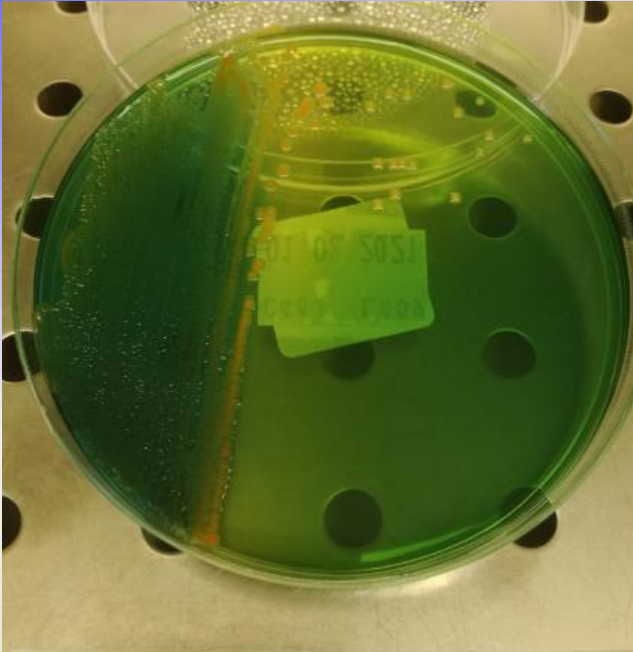
Kp: Typical colonies on SCAI

Recognizing typical colonies is a matter of experience, sometimes it can be complicated due to hypermucoid strains



Klebsiella spp: Typical colonies

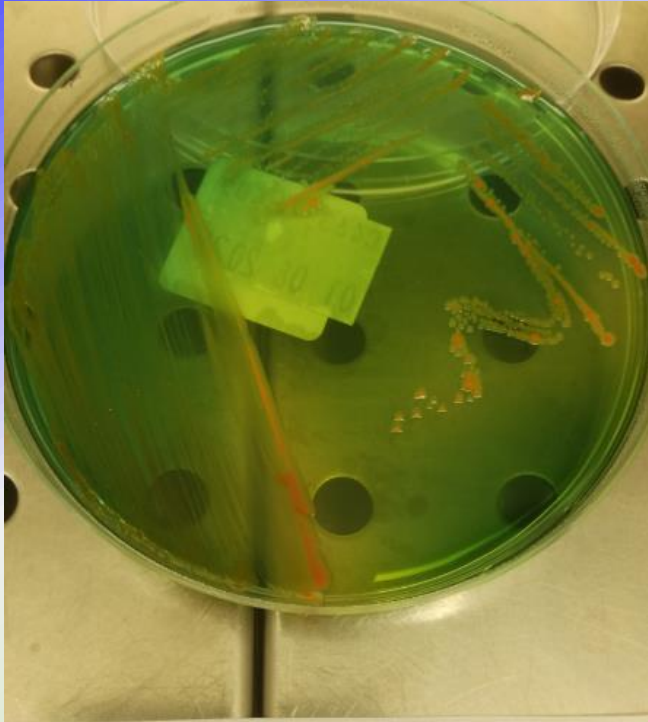
All Kp complex members are able to grow at 44 °C



K. variicola



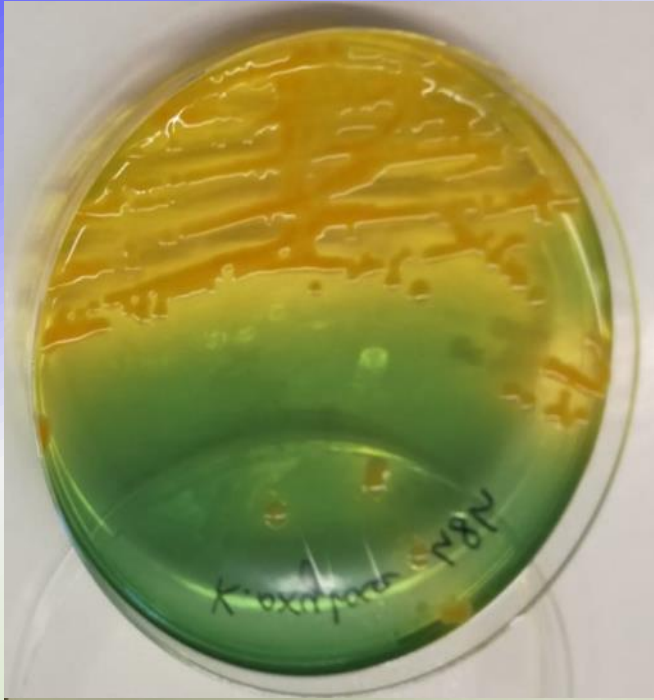
Klebsiella spp: Typical colonies



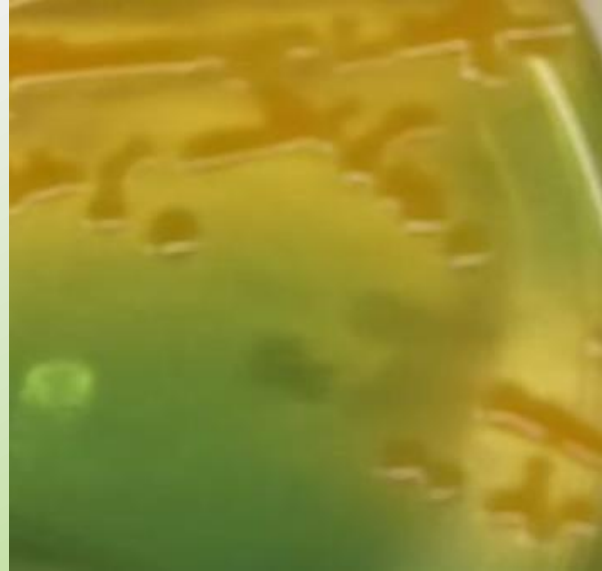
K. aerogenes



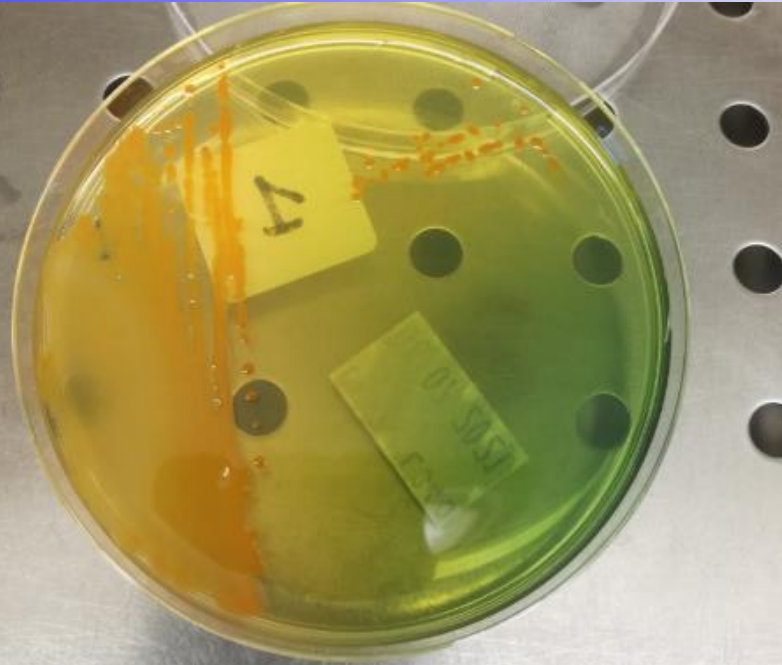
Klebsiella spp: Typical colonies



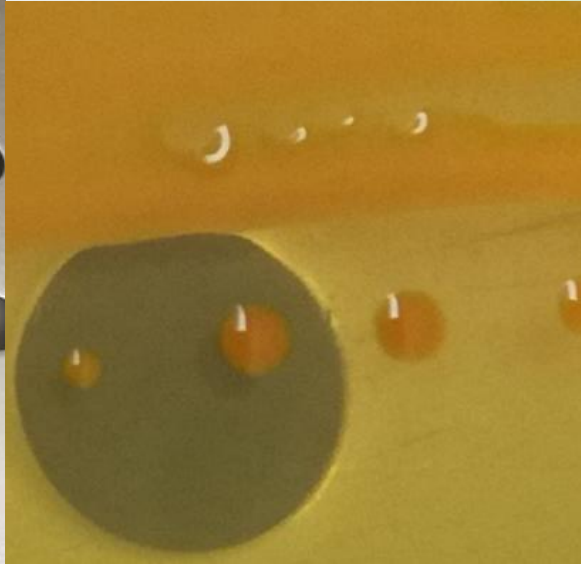
K. oxytoca



Other *Enterobacteriaceae*: Typical colonies on SCAI

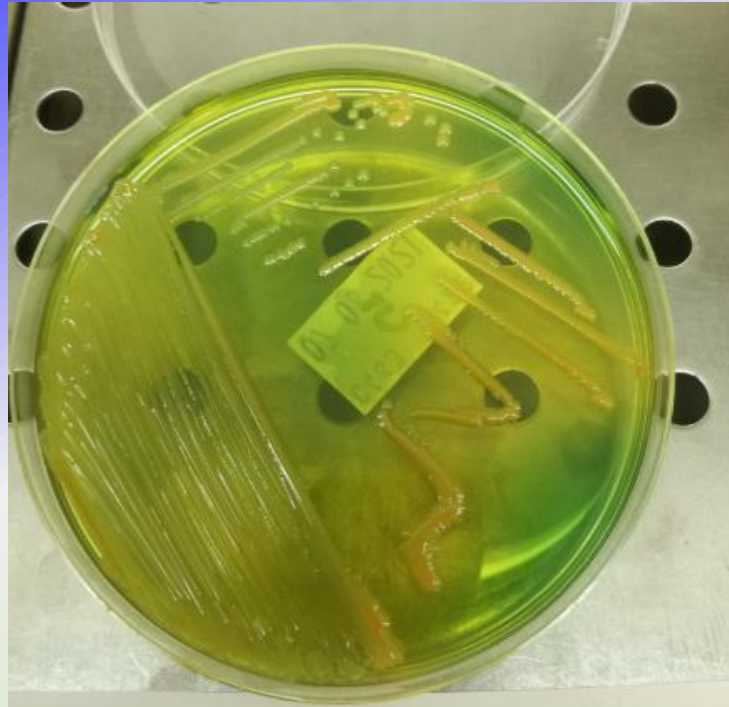


Raoultella ornithinolytica



Interferences of
other
Enterobacteriaceae
with similar colony
morphology.
Incubation at 44°C
provide less
interferences.

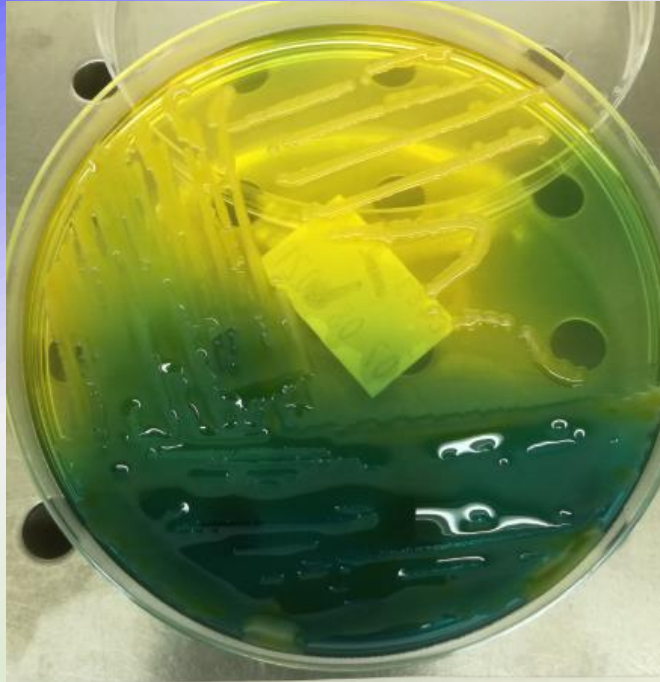
Other *Enterobacteriaceae*: Typical colonies on SCAI



Enterobacter aerogenes



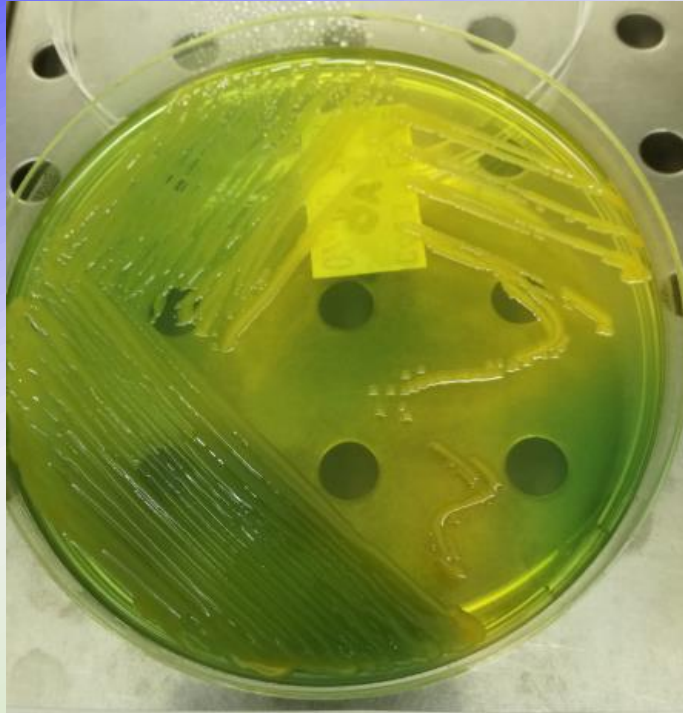
Other *Enterobacteriaceae*: Typical colonies on SCAI



Citrobacter koseri



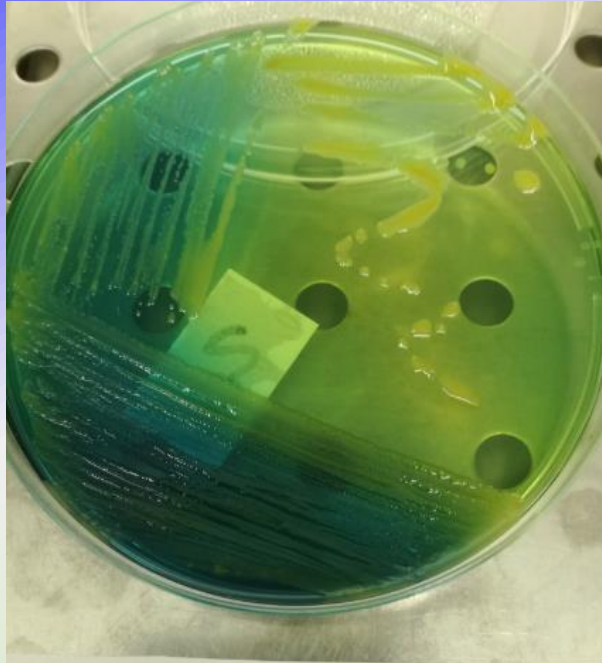
Other *Enterobacteriaceae*: Typical colonies on SCAI



Serratia marcescens



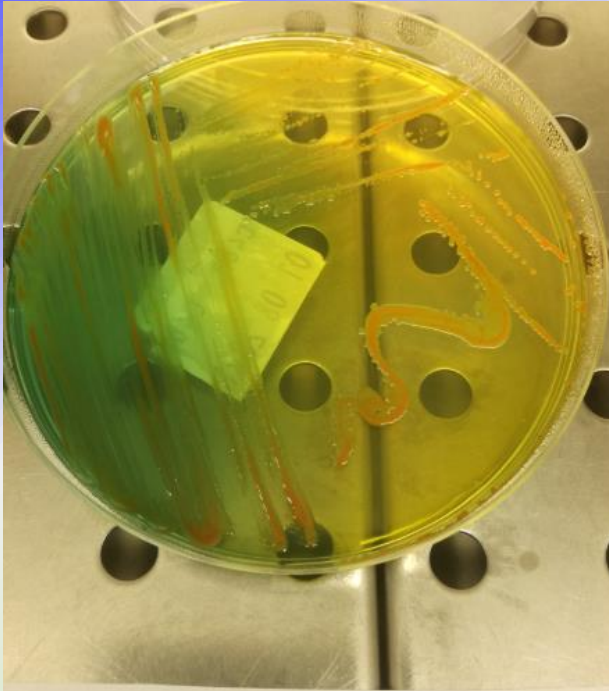
Other *Enterobacteriaceae*: Typical colonies on SCAI



Pantoea septica



Other *Enterobacteriaceae*: Typical colonies on SCAI



Aeromonas caviae



Typical colonies on Klebsiella ChromoSelect Sigma-Aldrich

Klebsiella pneumoniae



Klebsiella ornithinolytica



Typical colonies on Klebsiella ChromoSelect Sigma-Aldrich

Klebsiella ozaenae

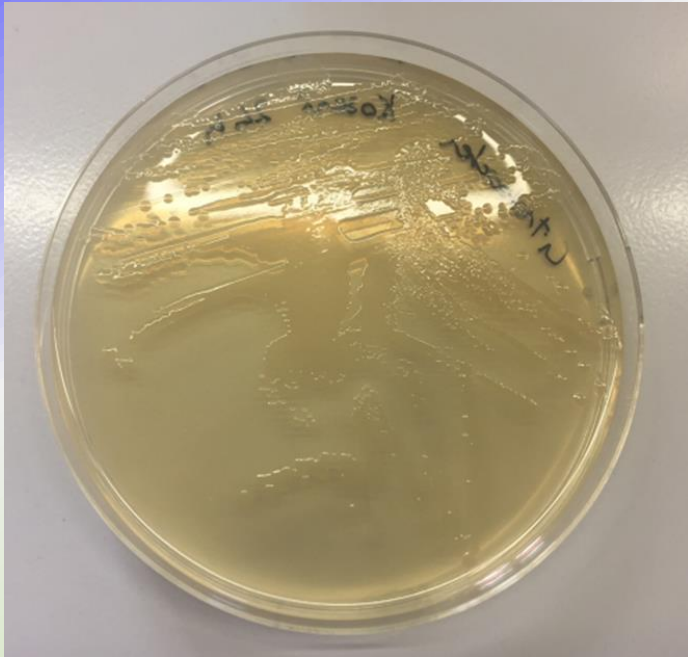


Klebsiella oxytoca

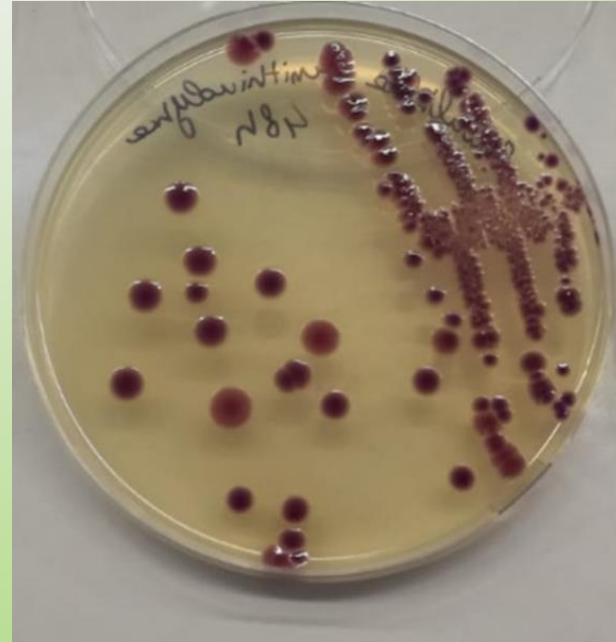


Typical colonies on Klebsiella ChromoSelect Sigma-Aldrich

Citrobacter koseri



Raoultella ornithinolytica

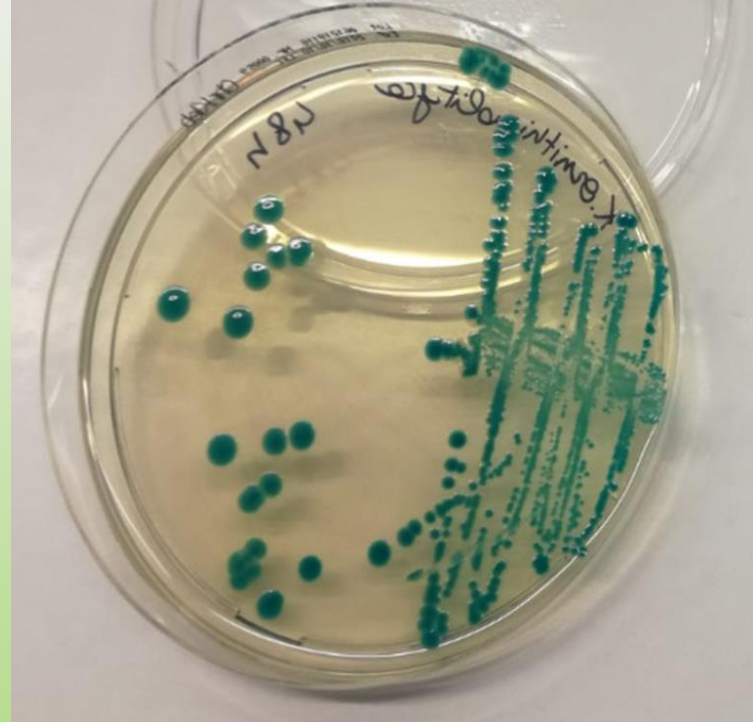


Typical colonies on Chromatic Detection Liofilchem

Klebsiella pneumoniae

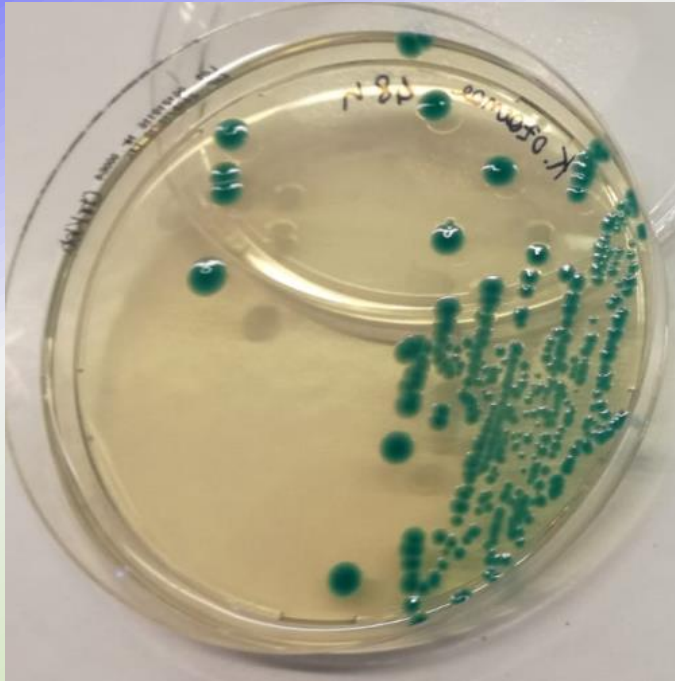


Klebsiella ornithinolytica



Typical colonies on Chromatic Detection Liofilchem

Klebsiella ozaenae

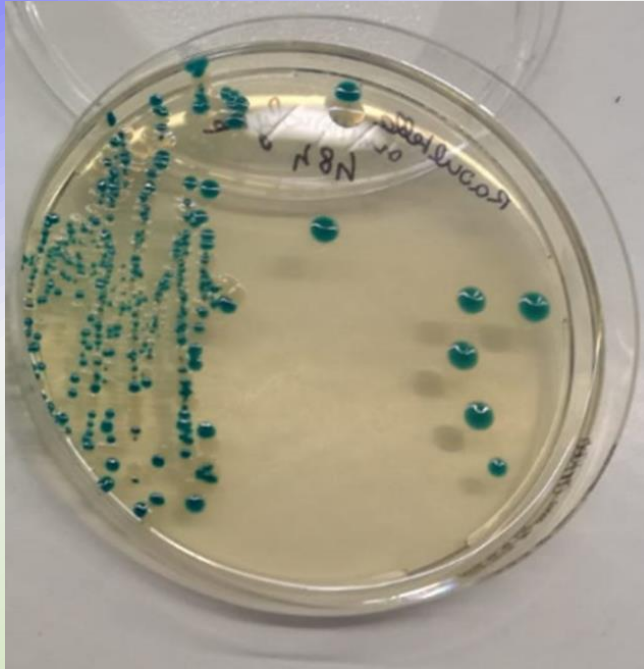


Klebsiella oxytoca

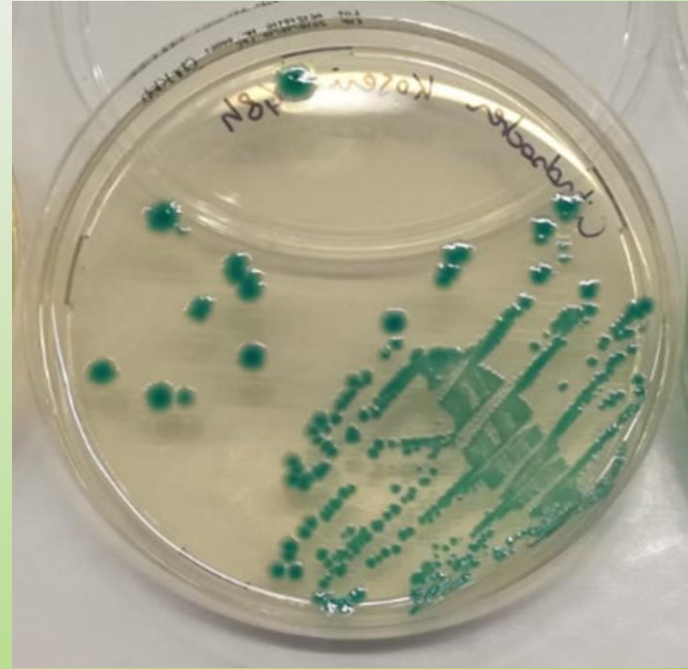


Typical colonies on Chromatic Detection Liofilchem

Raoultella ornithinolytica

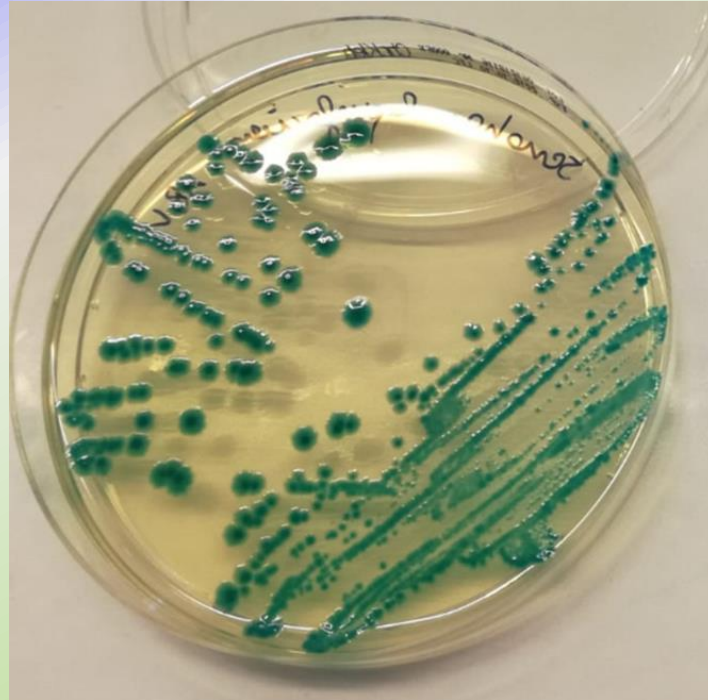


Citrobacter koseri



Typical colonies on Chromatic Detection Liofilchem

Serratia liquefaciens



THANK YOU FOR
YOUR ATTENTION!

Alessandra Cornacchia
a.cornacchia@izs.it

